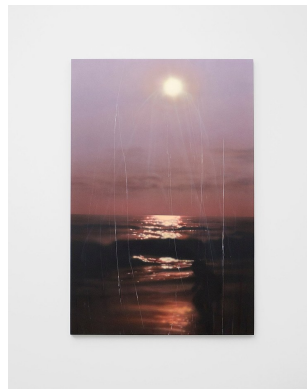


in lieu

1206 Maple Avenue, Suite 903
Los Angeles, CA 90015

323.208.9087
info@inlieu.online

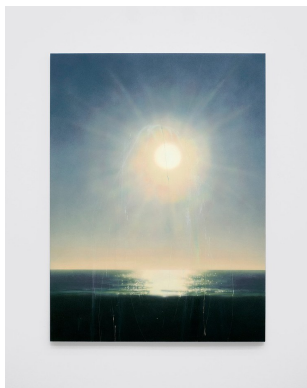
Christian Franzen, Ernesto Renda Christian Franzen, Ernesto Renda



Christian Franzen
Words unspoken, 2021
Acrylic on linen
60 x 40 inches



Christian Franzen
Still so far out of reach II, 2021
Acrylic on linen
40 x 30 inches



Christian Franzen

Disappear into a point, 2021

Acrylic on linen

48 x 36 inches



Christian Franzen

To Help You Really Feel It, 2021

Acrylic on canvas

30 x 22 inches



Christian Franzen

Bring it on Home, 2021

Acrylic on canvas

30 x 22 inches



Christian Franzen

It Falls Apart So Easy, 2021

Acrylic on linen

30 x 23 inches

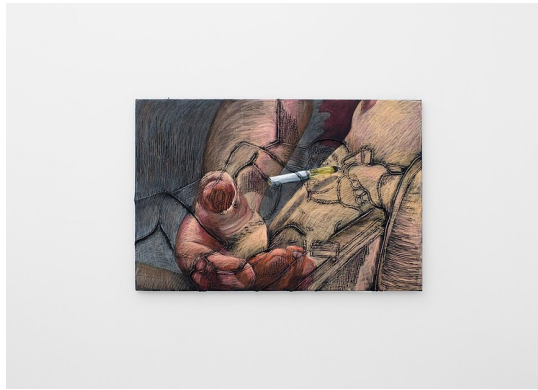


Ernesto Renda

Backstabbing, 2021

Wax pastel on canvas, glue on board

36 x 72 x 3 inches



Ernesto Renda

In the Bathtub (after The Sopranos (1999)), 2021

Wax pastel on canvas, glue on board

40 x 60 x 2.5 inches

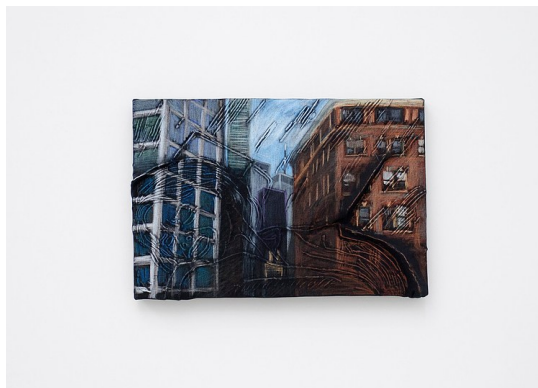


Ernesto Renda

Wig (The Arrest of Norman Bates, after Psycho (1960)), 2021

Wax pastel on canvas, glue on board

40 x 60 x 2.5 inches



Ernesto Renda

View of Downtown from South Street Seaport (after Dressed to Kill (1980)), 2021

Wax pastel on canvas, glue on board

12 x 18 x 2 inches

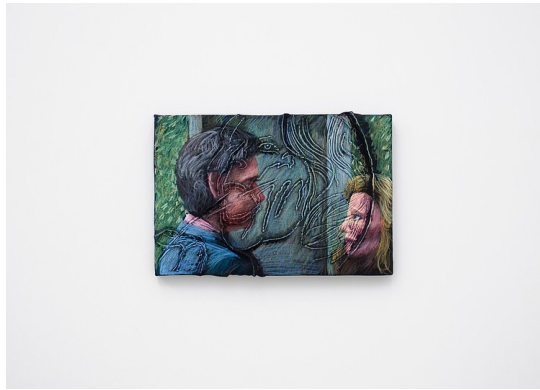


Ernesto Renda

Fistful of Sand (after Moonlight (2016)), 2021

Wax pastel on canvas, glue on board

12 x 18 x 2 inches

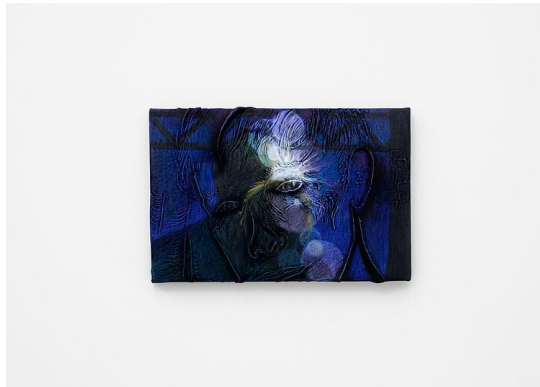


Ernesto Renda

Waiting for the Elevator, 2021

Wax pastel on canvas, glue on board

12 x 18 x 2 inches



Ernesto Renda

Flood Lights, 2021

Wax pastel on canvas, glue on board

12 x 18 x 2 inches